

# Pool Drainage

Ready to do some work on your pool? Before you start pumping out the water, you need to make sure that you are meeting the City's pool draining requirements. Changes to the policy are effective as of August 1. Previously, a permit was required for pool drainage.

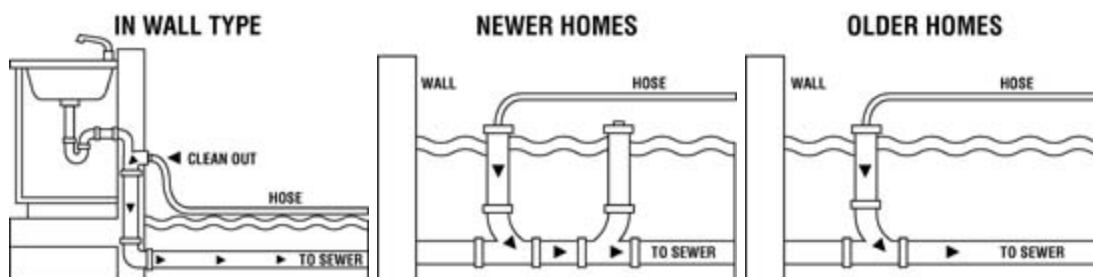
Keep the following points in mind when draining a pool or spa:

- To make the process more efficient and safer, it is now recommended that residents discharge the pool water directly into the sewer clean-out located on their property, and not into the street. There is no permit or notification needed. The process is easy and environmentally friendly.
- The sewer clean-out is typically a three- or four-inch black pipe about level with the landscaping, typically located close to the home. It may have a black cap, with a raised square nut or a recessed slot, which can be unscrewed to make way for the hose from the pool to drain the water. In a newer home, you may find that there are two clean-out pipes. In this case, you generally want to discharge into the one closer to the home.
- The recommended flow rate is no greater than 12 gallons per minute. The safe flow rate may differ depending on the size of the drain line, distance to the sewer main, and the condition of the pipes. If you have trouble locating your sewer clean-out, or have questions on proper drainage or safe flow rates, consult a plumber or check with your pool contractor.
- During general maintenance, when backwashing your pool, drainage into the sewer clean-out is not necessary as long as the discharge is maintained on your private property.

## Procedure for using the sewer clean-out:

- Locate the clean-out. If there are two, use the one closest to the home.
- Remove the cap and insert the drain hose a few inches into the pipe.
- Secure the drain hose so it won't pop out.
- Turn on the pump.
- Immediately check to make sure no water is backing up into the house. Drains for showers and tubs are the first places to check.
- If the water backs up, turn off the pump immediately. You may have a blockage, or the flow rate is too high.
- **Caution:** Using a clean-out in the wall is risky, and the potential for water backing up into the home is great.

## Diagrams of sewer clean-out:



**NOTE:** Do not install the pool drain line as a permanent fixture. This may violate the City plumbing code or County health regulations and could contaminate the water when you refill the pool. Pipes that are "hard plumbed" to discharge off property (i.e. to the street) are considered "a direct connection to the storm drain" and are prohibited.

*Diagrams courtesy of the City of Phoenix*

The chart below shows how long the draining process will take:

<b>HOURS REQUIRED TO DRAIN A POOL</b>							
<b>Flow Rate</b>		<b>Pool Volume (Gallons)</b>					
(gal/min)	(gal/hr)	10,000	11,000	12,000	13,000	14,000	15,000
6	360	28 hrs	31 hrs	33 hrs	36 hrs	39 hrs	42 hrs
7	420	24 hrs	26 hrs	29 hrs	31 hrs	33 hrs	36 hrs
8	480	21 hrs	23 hrs	25 hrs	27 hrs	29 hrs	31 hrs
9	540	19 hrs	20 hrs	22 hrs	24 hrs	26 hrs	28 hrs
10	600	17 hrs	18 hrs	20 hrs	22 hrs	23 hrs	25 hrs
11	660	15 hrs	17 hrs	18 hrs	20 hrs	21 hrs	23 hrs
12	720	14 hrs	15 hrs	17 hrs	18 hrs	19 hrs	21 hrs

*Information courtesy of the City of Phoenix.*

If you have questions or need additional assistance, please call (480) 782-3502.